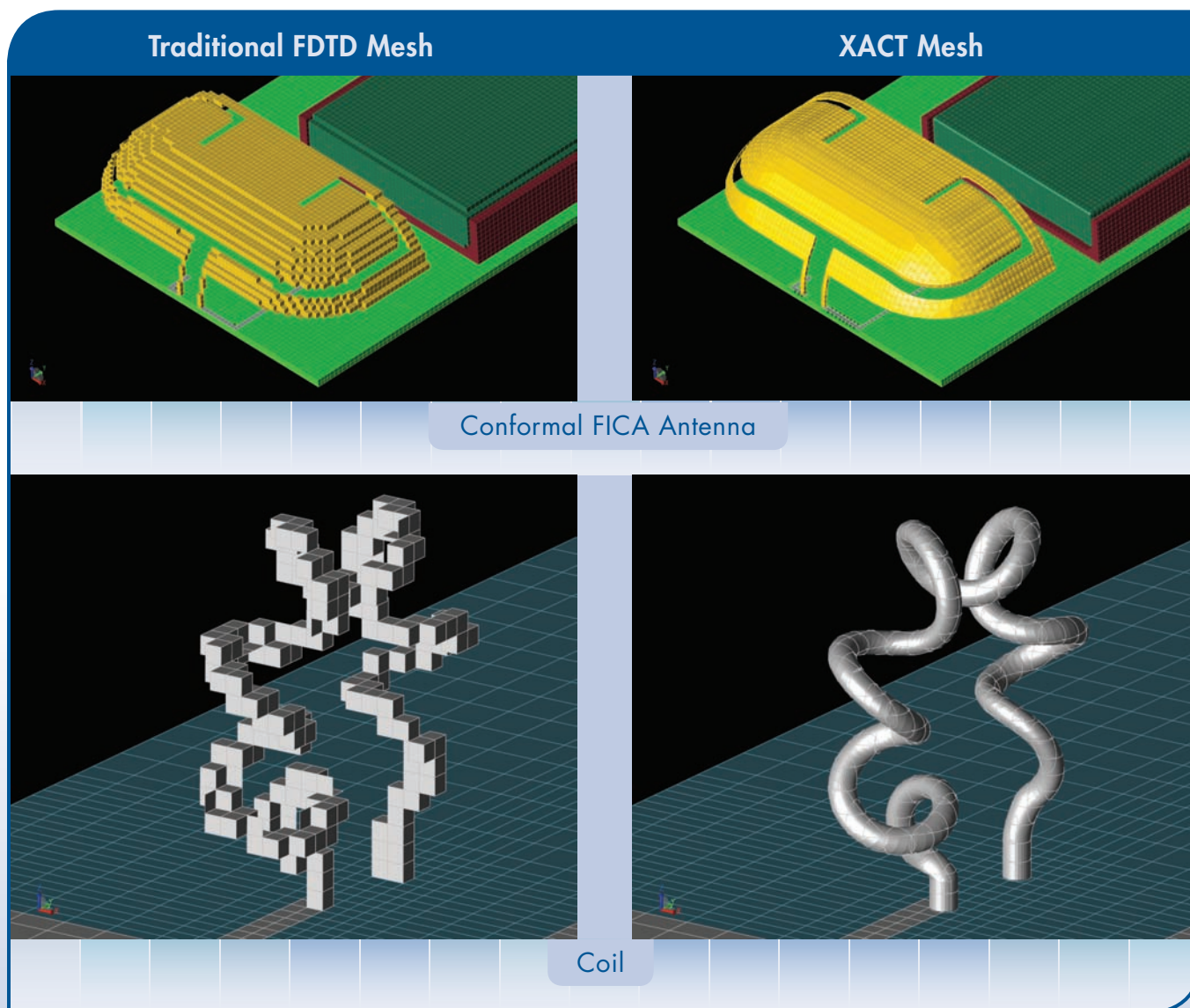
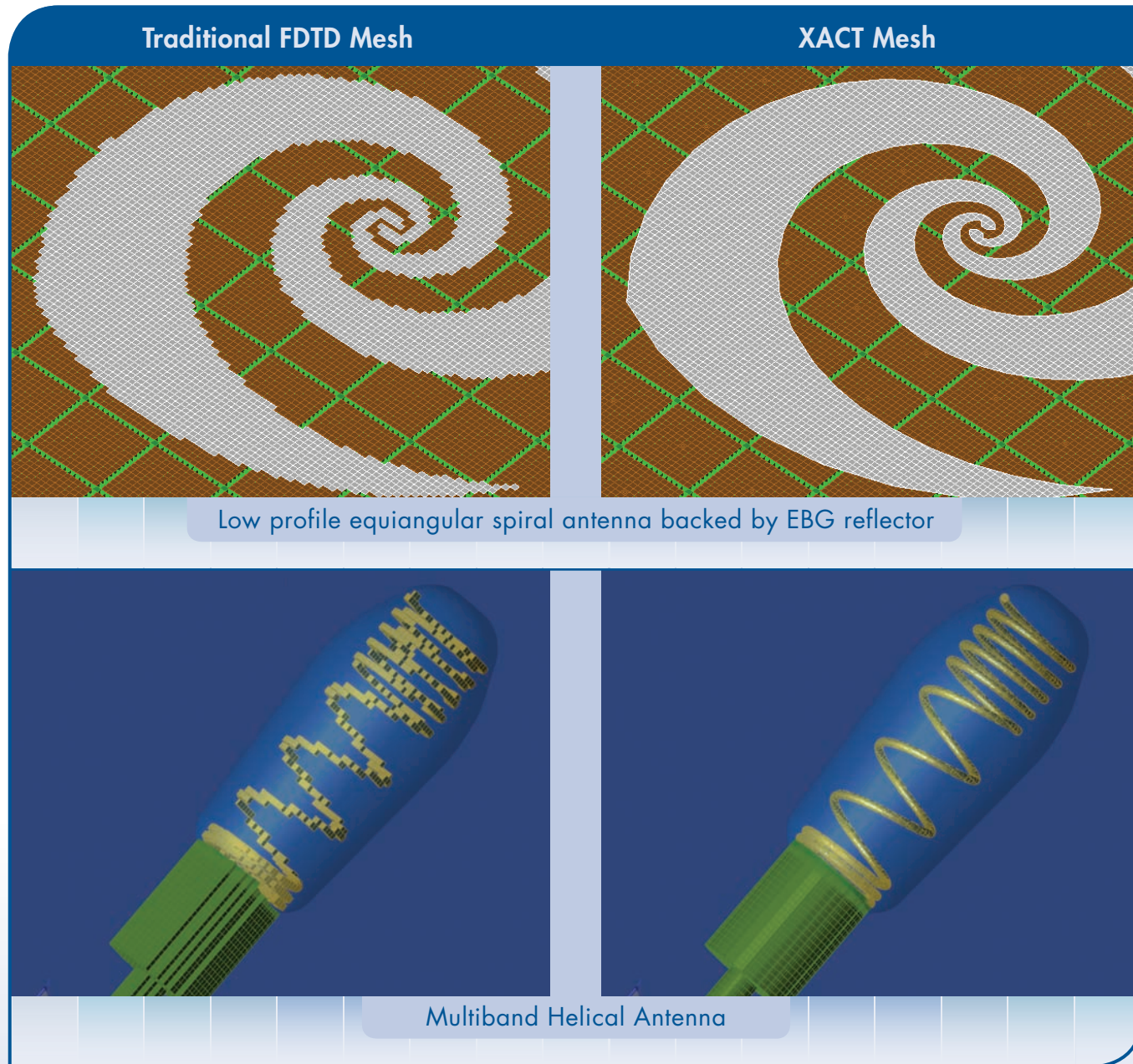


XACT Accurate Cell Technology Faster, More Accurate Simulations

XF7's new XACT mesh reduces your simulation time while improving the accuracy of even the most intricate designs. Important geometrical features including complex curved surfaces and small gaps are resolved using an advanced sub-cellular conformal method. By representing input geometry more precisely, XACT mesh allows you to reduce computing resources while maintaining the accuracy of a full wave solver. Faster, more accurate simulations improve the throughput of your designs from start to finish.

Here are some comparisons showing the dramatic improvement with XACT:





Low profile equiangular spiral antenna backed by EBG reflector

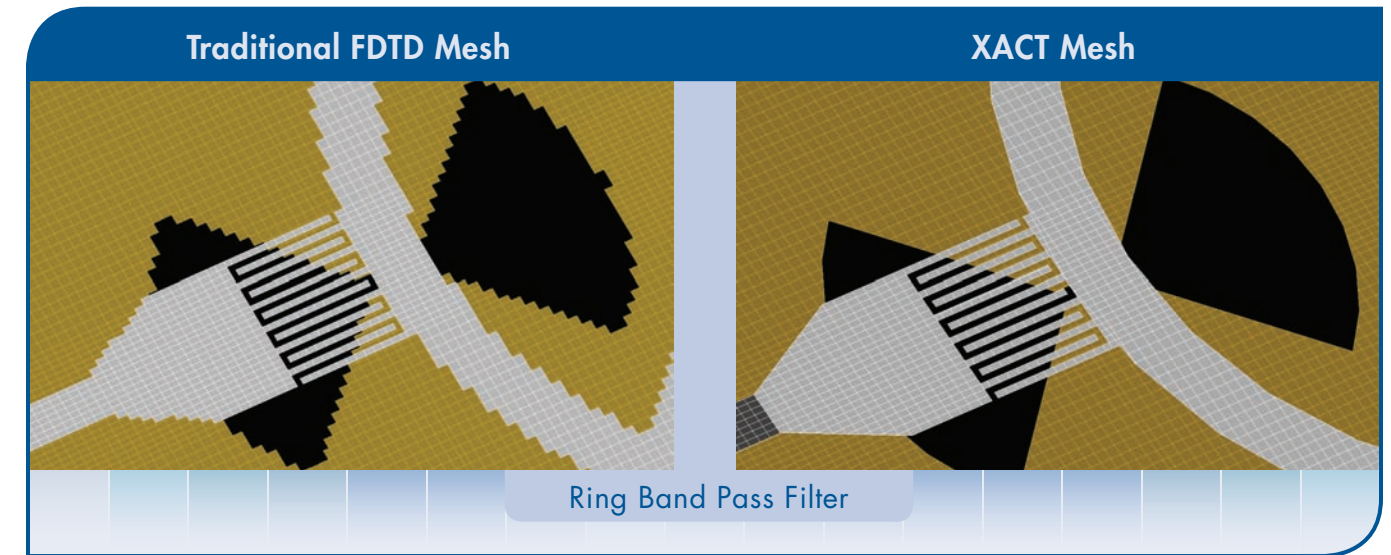
Multiband Helical Antenna

Benefits

- Represents small gaps and curved surfaces
- Increases accuracy of results
- Significantly improves simulation time by reducing unknowns

Other Key Features

- Provides efficient workflow through easy user interface
- Visualizing conformal contours ensures confidence in the mesh
- Performs in conjunction with XStream GPU, multiprocessor, and MPI acceleration technologies

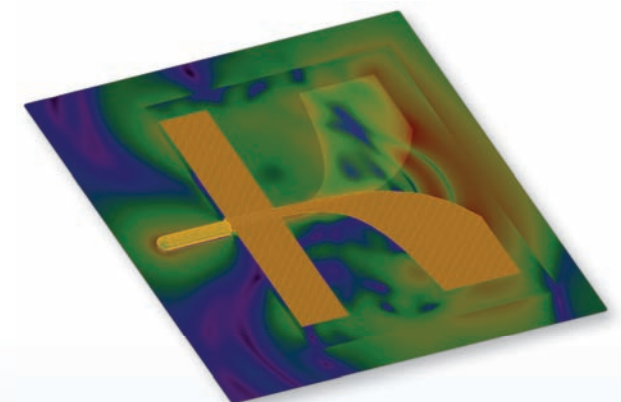


Ring Band Pass Filter

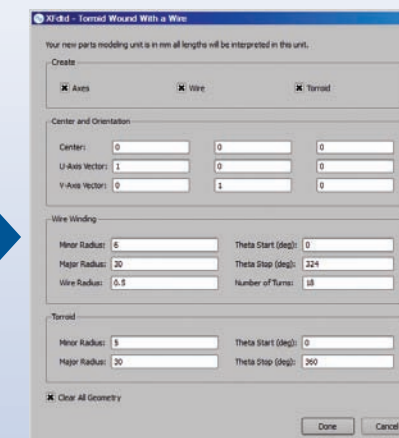
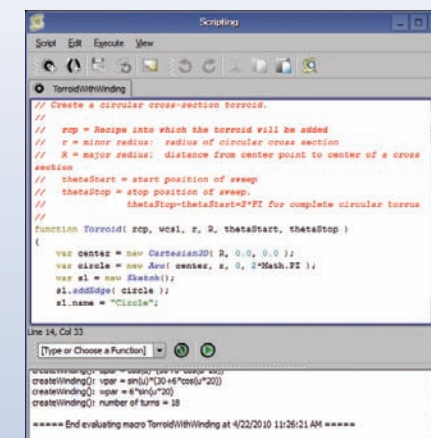
XTend Script Library

XF7 adds control and customization to your workflow, allowing you to adapt the software to your unique processes and extend the functionality of the tool.

- Use the pre-loaded scripts in XF7 to automate your modeling and design
- Further customize the scripts for your specific needs
- Request additional scripts from Remcom's development team at no cost



XTend Antipodal Vivaldi Antenna simulated using XACT mesh.



XTend unleashes the power of XFtd, providing unlimited possibilities from geometry to postprocessing.

■ Learn More at www.remcom.com/xf7

- Acceleration options
- Complete capabilities list
- Key features and benefits
- Pricing and licensing
- Resources, videos, application examples

■ XSite – Remcom’s Monthly e-Newsletter for EM Professionals

Subscribe to XSite, Remcom’s monthly e-newsletter, to be notified of product announcements and special offers, support tips, new technical articles, and upcoming events.

Subscribe by visiting www.remcom.com/customer-communications

Remcom has been leading the EM market with innovative simulation and wireless propagation tools for 15 years. In addition to our flagship product, XFtd, we offer a suite of innovative software and services, accessible and responsive support provided by a staff of experts, and comprehensive training. Our family of products includes:



XFtd[®]: General purpose, full wave 3D EM analysis software for modeling, importing, and analyzing complex structures.



Wireless InSite[®]: A radio propagation analysis package for analyzing the impact of the physical environment on the performance of wireless communication systems.



XStream[®]: GPU acceleration using NVIDIA’s CUDA architecture dramatically speeds numerical computations.



VariPose[®]: A geometric modeling package for the manipulation and refining of high-resolution human mesh models for the medical and biomedical markets.



XGtd[®]: A high frequency GTD/UTD based package for the design and analysis of antenna systems on complex objects such as vehicles and aircraft.



Rotman Lens Designer[™]: A tool for the design, synthesis, and analysis of Rotman Lenses.

Visit www.remcom.com for more information

Remcom, Inc.
315 S. Allen St., Suite 222
State College, PA 16801 USA

+1.888.7.REMCOM (US/CAN)
+1.814.861.1299 phone
+1.814.861.1308 fax

sales@remcom.com



www.facebook.com/remcomsoftware